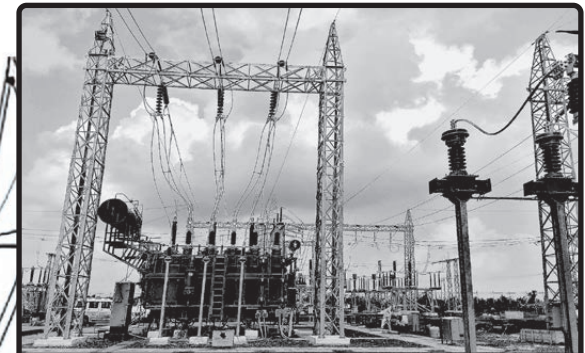
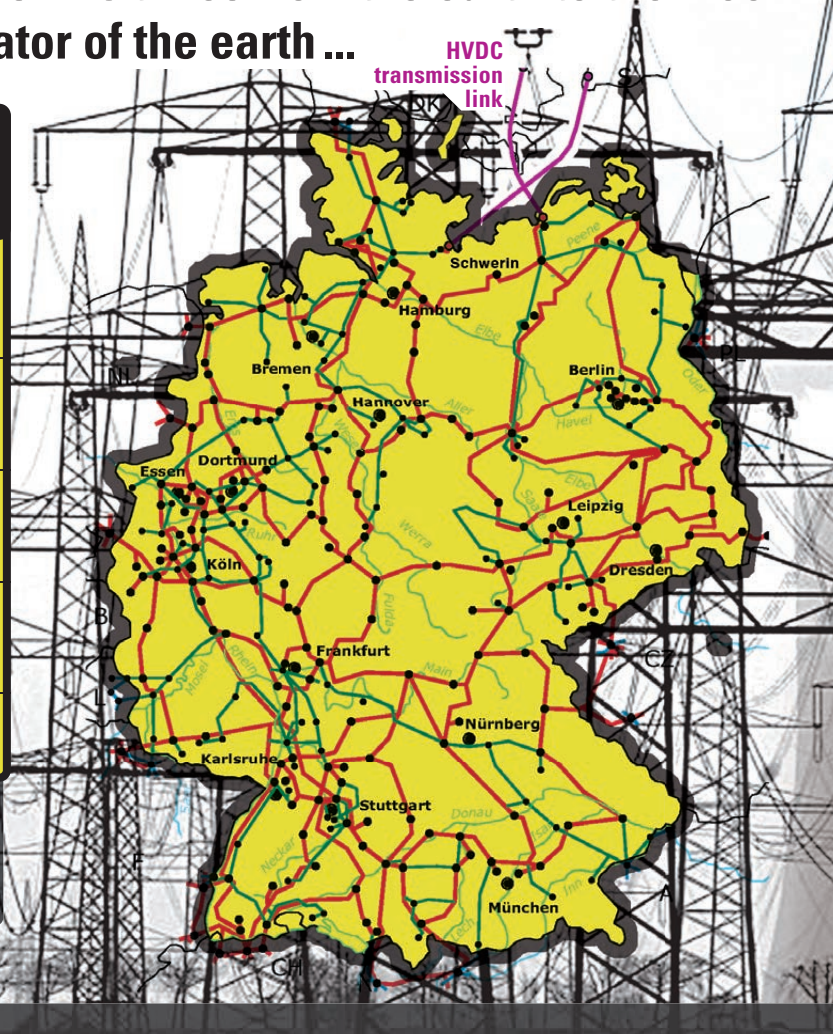
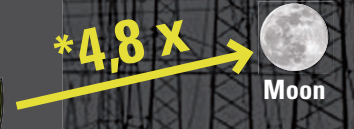
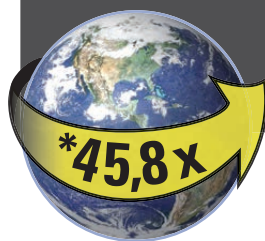


The German Power Grid* 2019/2020

The Power Grid length reaches *4.8 times from the earth to the moon.
Or *+45 times around the equator of the earth ...

⚡ Electric circuit distances in Germany in km	
⚡ Low voltage [0,4 Kilovolt]	1.200.000
⚡ Medium voltage [6 to ≤ 60 Kilovolt]	525.000
⚡ High voltage [> 60 to < 220 Kilovolt]	85.700
⚡ Extra-high-voltage [220 and 380 Kilovolt]	37.050
total:	1.848.250*



⚡ Numbers of substations/transformers ¹	
⚡ Medium voltage [6 to ≤ 60 Kilovolt]	557.700
⚡ High voltage [> 60 to < 220 Kilovolt]	7.500
⚡ Extra-high-voltage [220 and 380 Kilovolt]	1.100
total:	566.300

1) Figures from 2006.
We could not get any updates from the responsible German institutions ...

IMPLEMENTING NEW IDEAS TO SUPPORT OUR ENERGY FUTURE >>> www.aaevers.com



- > Source: Verband der Netzbetreiber (VDN) Deutsches Hochspannungsnetz, Berlin, Deutschland and BDEW; www.swissgrid.ch
- > First released: 2007; latest update: August 2021